

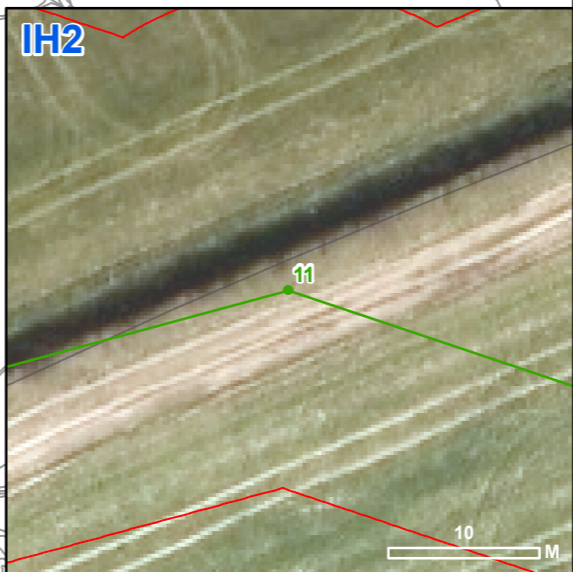
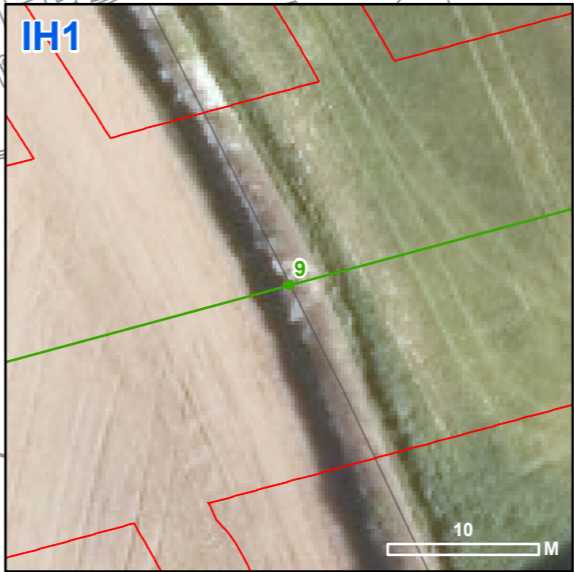
# SP MANWEB

## Reinforcement to the North Shropshire Electricity Distribution Network



Document Reference: 2.5  
Plan of Important Hedgerows Affected

PINS Reference: EN020021  
Regulation Reference: 5(2)(o)  
November 2018



**KEY**

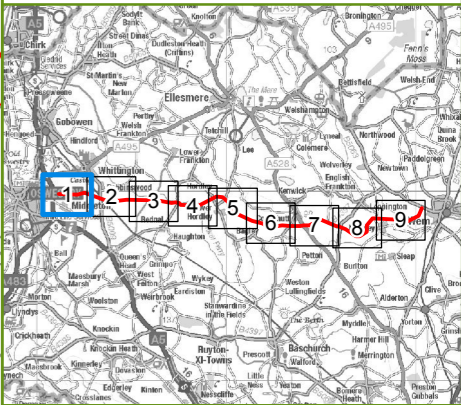
- PROPOSED 132 kV POLE POSITIONS
- FINAL ROUTE ALIGNMENT
- ORDER LIMITS

**Notes:**

This drawing is scaled at an A3 paper size, therefore any prints made at a smaller size will affect the accuracy of measurement units and should not be scaled against.



BACKGROUND MAPPING INFORMATION HAS BEEN REPRODUCED FROM THE ORDNANCE SURVEY MAP BY PERMISSION OF ORDNANCE SURVEY ON BEHALF OF THE CONTROLLER OF HER MAJESTY'S STATIONERY OFFICE. CROWN COPYRIGHT AND DATABASE RIGHTS 2018. ORDNANCE SURVEY 0100031673. CONTAINS OS DATA © CROWN COPYRIGHT AND DATABASE RIGHT 2018.



**GILLESPIES SP MANWEB**

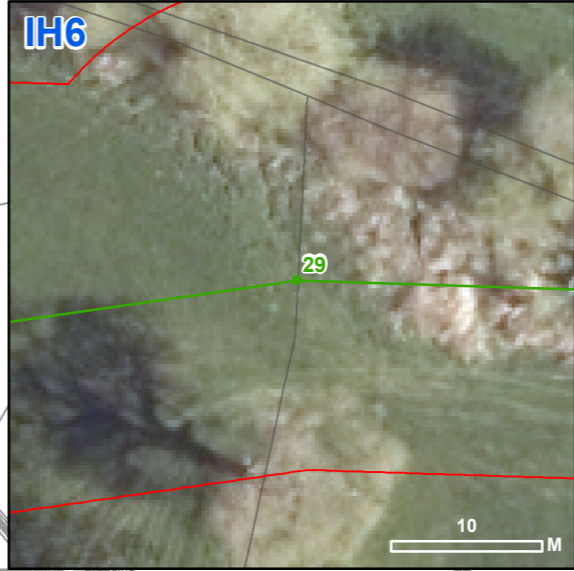
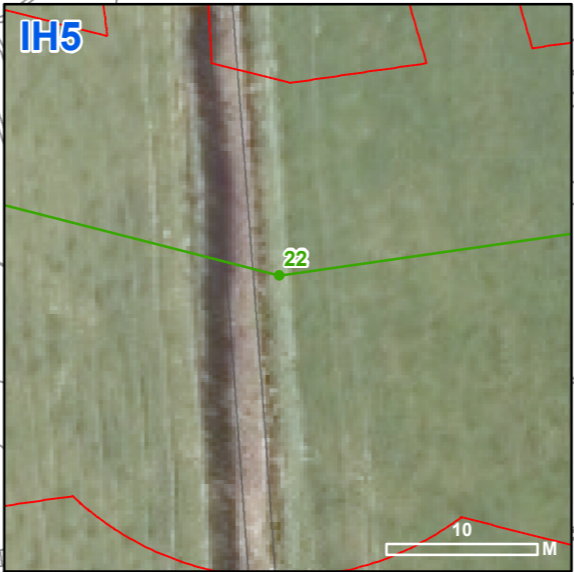
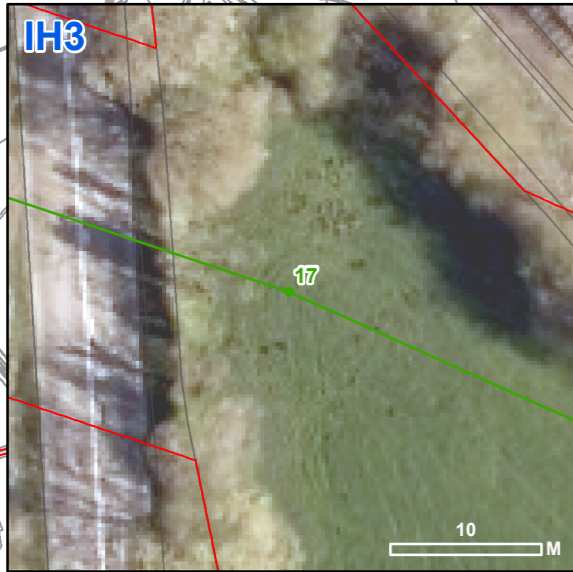
Scheme Name: REINFORCEMENT TO NORTH SHROPSHIRE ELECTRICITY DISTRIBUTION NETWORK

Document: DCO DOCUMENT 2.5

Document Title: PLAN OF IMPORTANT HEDGEROWS AFFECTED 1 OF 9

Drawn: KC	Checked: ZF	Approved: JC	Date: 19/10/2018	Sheet: 1 OF 9	Rev: 1
-----------	-------------	--------------	------------------	---------------	--------

Document Type: FIGURE	Scale: 1:7,500	Sheet Size: A3 (420 mm x 297 mm)
-----------------------	----------------	----------------------------------



**KEY**

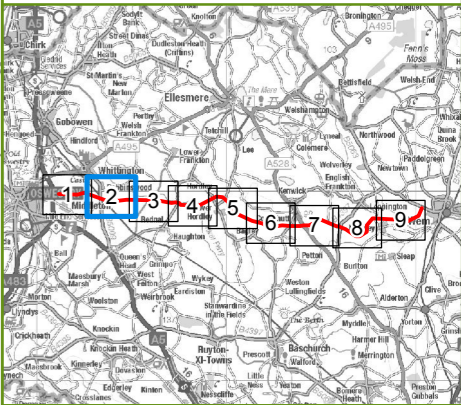
- PROPOSED 132 kV POLE POSITIONS
- FINAL ROUTE ALIGNMENT
- ORDER LIMITS

**Notes:**

This drawing is scaled at an A3 paper size, therefore any prints made at a smaller size will affect the accuracy of measurement units and should not be scaled against.



BACKGROUND MAPPING INFORMATION HAS BEEN REPRODUCED FROM THE ORDNANCE SURVEY MAP BY PERMISSION OF ORDNANCE SURVEY ON BEHALF OF THE CONTROLLER OF HER MAJESTY'S STATIONARY OFFICE. CROWN COPYRIGHT AND DATABASE RIGHTS 2018. ORDNANCE SURVEY 0100031673. CONTAINS OS DATA © CROWN COPYRIGHT AND DATABASE RIGHT 2018.



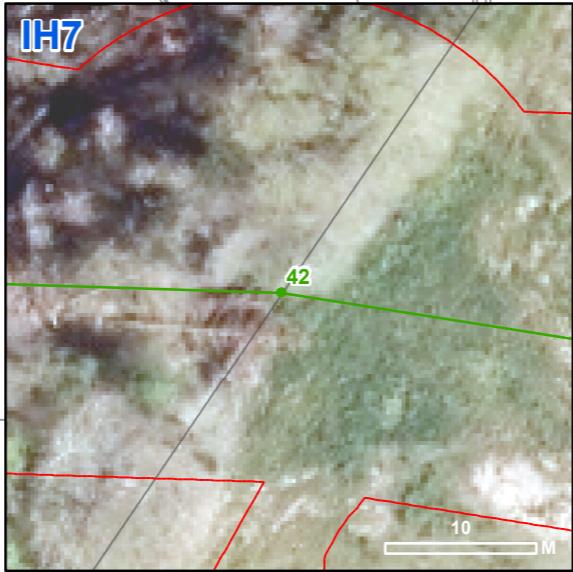
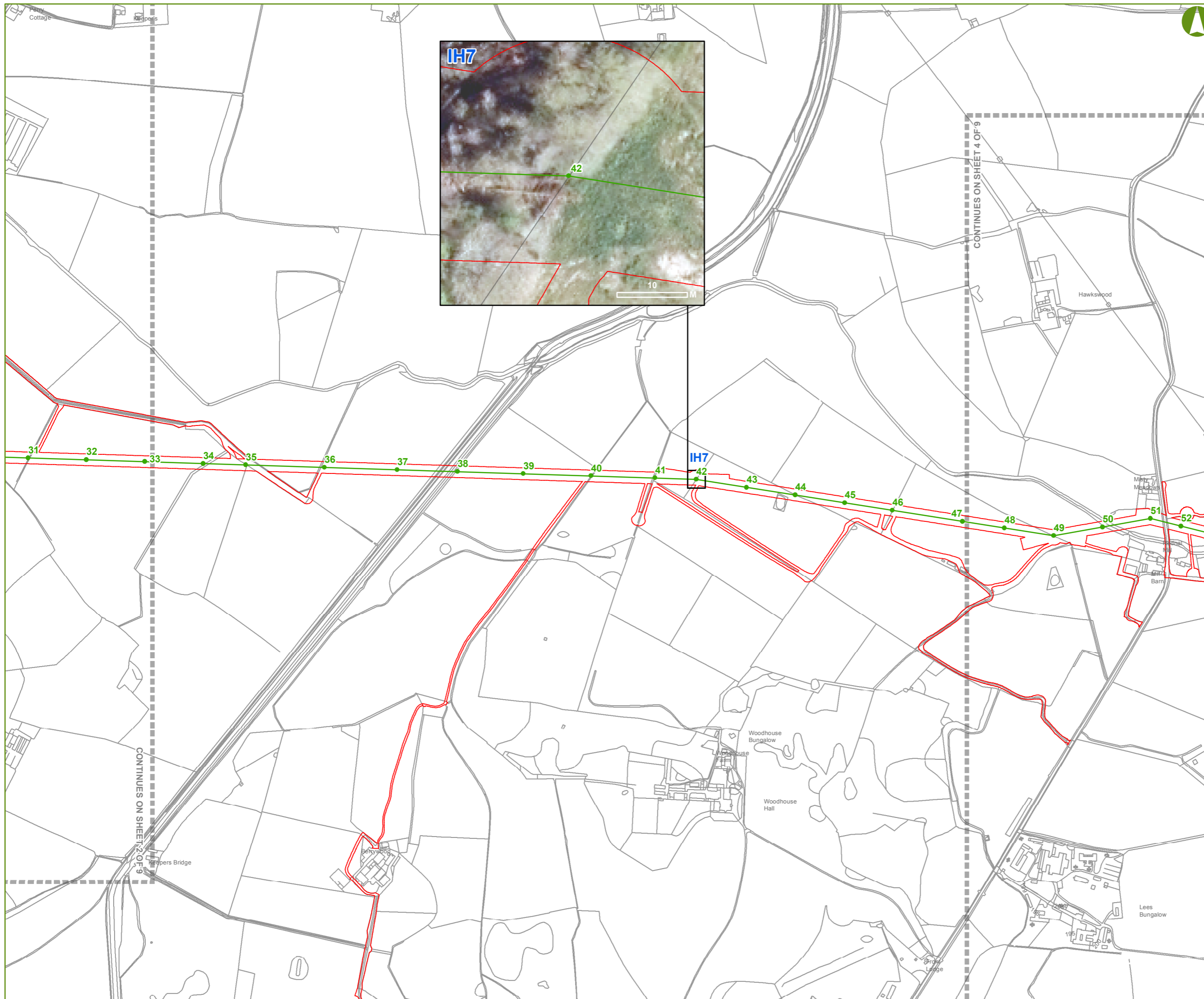
**GILLESPIES SP MANWEB**

Scheme Name: REINFORCEMENT TO NORTH SHROPSHIRE ELECTRICITY DISTRIBUTION NETWORK

Document: DCO DOCUMENT 2.5

Document Title: PLAN OF IMPORTANT HEDGEROWS AFFECTED 2 OF 9

Drawn: KC	Checked: ZF	Approved: JC	Date: 19/10/2018	Sheet: 2 OF 9	Rev: 1
Document Type: FIGURE	Scale: 1:7,500	Sheet Size: A3 (420 mm x 297 mm)			



KEY

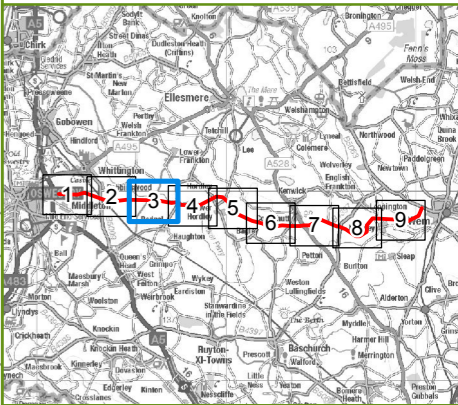
- PROPOSED 132 kV POLE POSITIONS
- FINAL ROUTE ALIGNMENT
- ORDER LIMITS

Notes:

This drawing is scaled at an A3 paper size, therefore any prints made at a smaller size will affect the accuracy of measurement units and should not be scaled against.



BACKGROUND MAPPING INFORMATION HAS BEEN REPRODUCED FROM THE ORDNANCE SURVEY MAP BY PERMISSION OF ORDNANCE SURVEY ON BEHALF OF THE CONTROLLER OF HER MAJESTY'S STATIONERY OFFICE. CROWN COPYRIGHT AND DATABASE RIGHTS 2018. ORDNANCE SURVEY 0100031673. CONTAINS OS DATA © CROWN COPYRIGHT AND DATABASE RIGHT 2018.



GILLESPIES

SP MANWEB

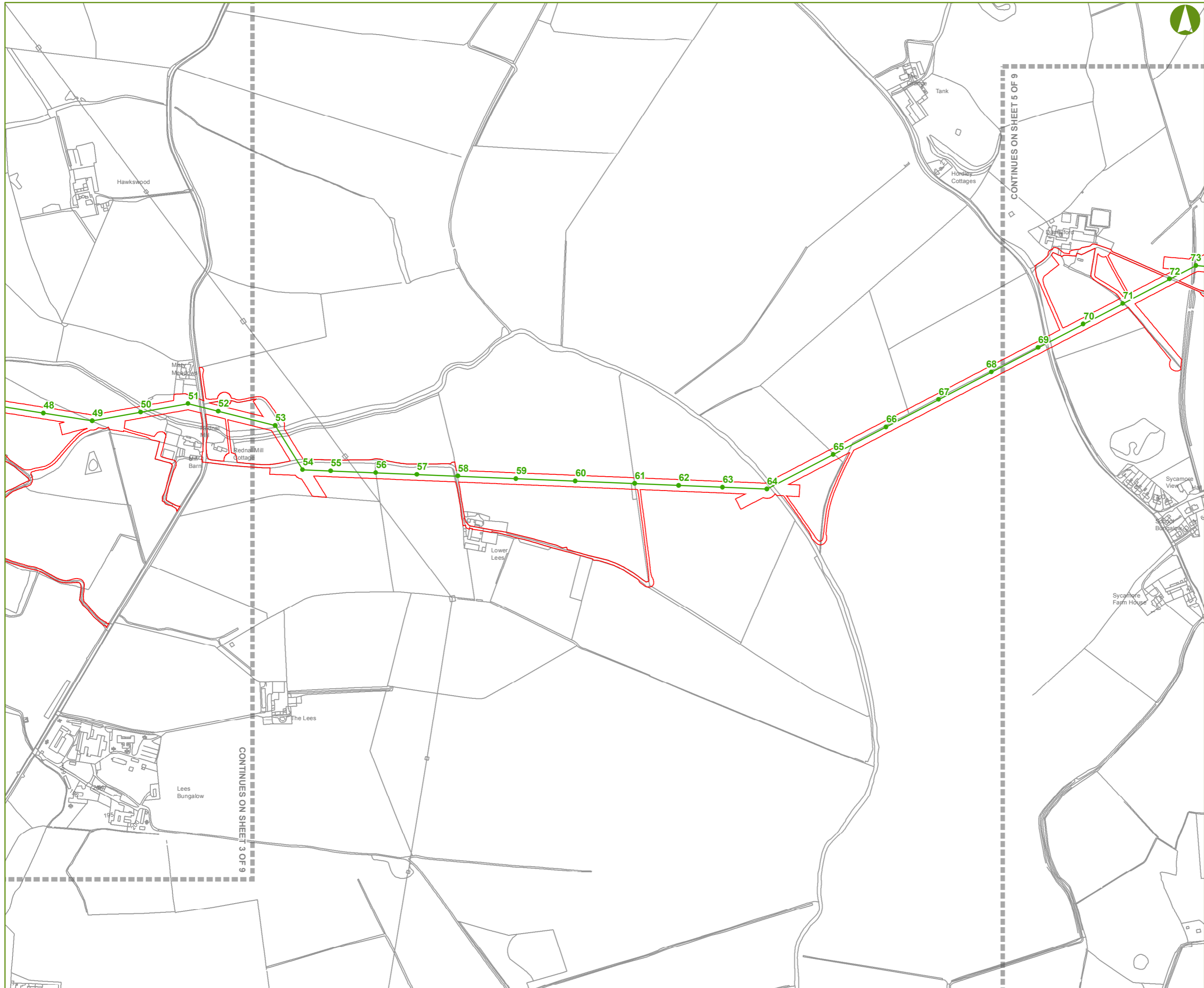
Scheme Name: REINFORCEMENT TO NORTH SHROPSHIRE ELECTRICITY DISTRIBUTION NETWORK

Document: DCO DOCUMENT 2.5

Document Title: PLAN OF IMPORTANT HEDGEROWS AFFECTED 3 OF 9

Drawn: KC	Checked: ZF	Approved: JC	Date: 19/10/2018	Sheet: 3 OF 9	Rev: 1
-----------	-------------	--------------	------------------	---------------	--------

Document Type: FIGURE	Scale: 1:7,500	Sheet Size: A3 (420 mm x 297 mm)
-----------------------	----------------	----------------------------------



**KEY**

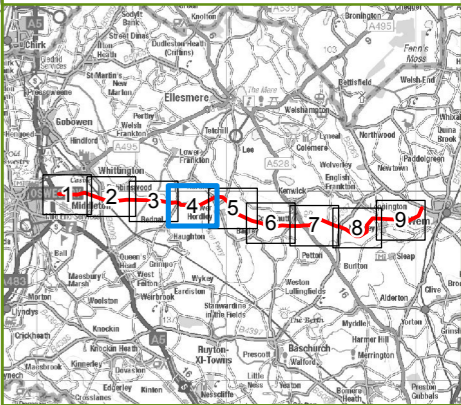
- PROPOSED 132 kV POLE POSITIONS
- FINAL ROUTE ALIGNMENT
- ORDER LIMITS

**Notes:**

This drawing is scaled at an A3 paper size, therefore any prints made at a smaller size will affect the accuracy of measurement units and should not be scaled against.



BACKGROUND MAPPING INFORMATION HAS BEEN REPRODUCED FROM THE ORDNANCE SURVEY MAP BY PERMISSION OF ORDNANCE SURVEY ON BEHALF OF THE CONTROLLER OF HER MAJESTY'S STATIONERY OFFICE. CROWN COPYRIGHT AND DATABASE RIGHTS 2018. ORDNANCE SURVEY 0100031673. CONTAINS OS DATA © CROWN COPYRIGHT AND DATABASE RIGHT 2018.



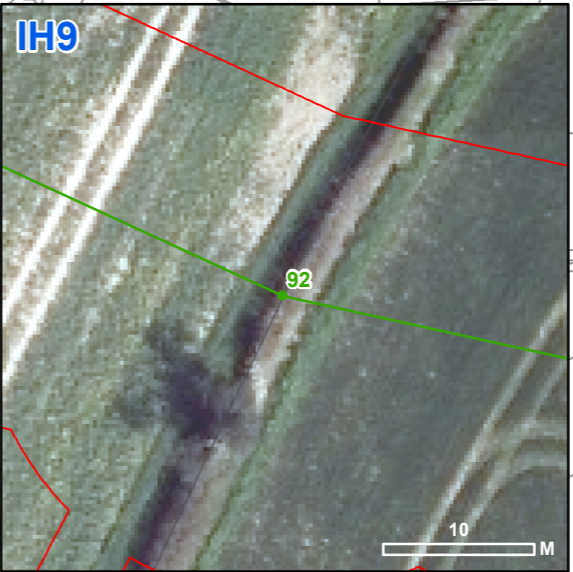
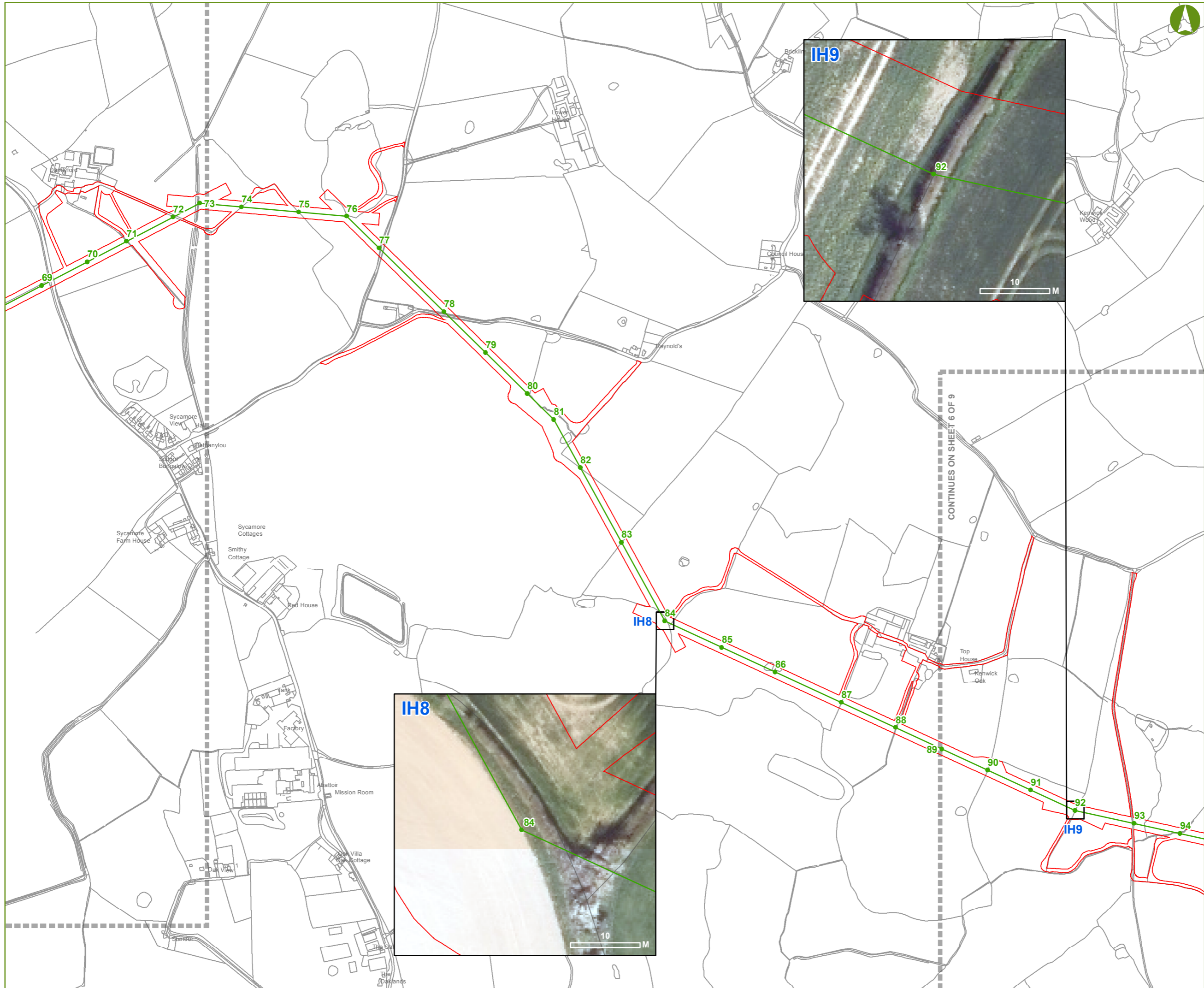
**GILLESPIES** **SP MANWEB**

Scheme Name: REINFORCEMENT TO NORTH SHROPSHIRE ELECTRICITY DISTRIBUTION NETWORK

Document: DCO DOCUMENT 2.5

Document Title: PLAN OF IMPORTANT HEDGEROWS AFFECTED 4 OF 9

Drawn: KC	Checked: ZF	Approved: JC	Date: 19/10/2018	Sheet: 4 OF 9	Rev: 1
Document Type: FIGURE		Scale: 1:7,500	Sheet Size: A3 (420 mm x 297 mm)		



**KEY**

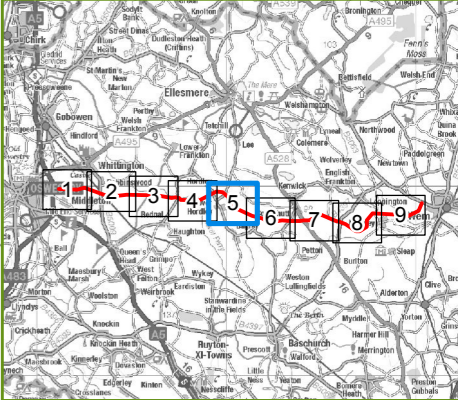
- PROPOSED 132 kV POLE POSITIONS
- FINAL ROUTE ALIGNMENT
- ORDER LIMITS

**Notes:**

This drawing is scaled at an A3 paper size, therefore any prints made at a smaller size will affect the accuracy of measurement units and should not be scaled against.



BACKGROUND MAPPING INFORMATION HAS BEEN REPRODUCED FROM THE ORDNANCE SURVEY MAP BY PERMISSION OF ORDNANCE SURVEY ON BEHALF OF THE CONTROLLER OF HER MAJESTY'S STATIONERY OFFICE. CROWN COPYRIGHT AND DATABASE RIGHTS 2018. ORDNANCE SURVEY 0100031673. CONTAINS OS DATA © CROWN COPYRIGHT AND DATABASE RIGHT 2018.



**GILLESPIES SP MANWEB**

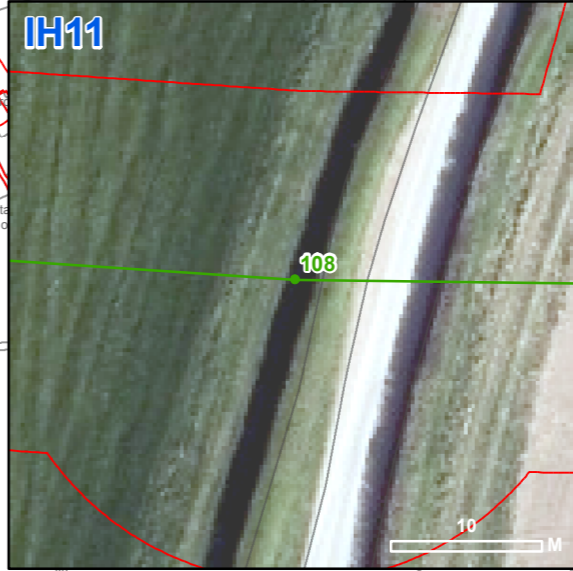
Scheme Name: REINFORCEMENT TO NORTH SHROPSHIRE ELECTRICITY DISTRIBUTION NETWORK

Document: DCO DOCUMENT 2.5

Document Title: PLAN OF IMPORTANT HEDGEROWS AFFECTED 5 OF 9

Drawn: KC	Checked: ZF	Approved: JC	Date: 19/10/2018	Sheet: 5 OF 9	Rev: 1
-----------	-------------	--------------	------------------	---------------	--------

Document Type: FIGURE	Scale: 1:7,500	Sheet Size: A3 (420 mm x 297 mm)
-----------------------	----------------	----------------------------------



**KEY**

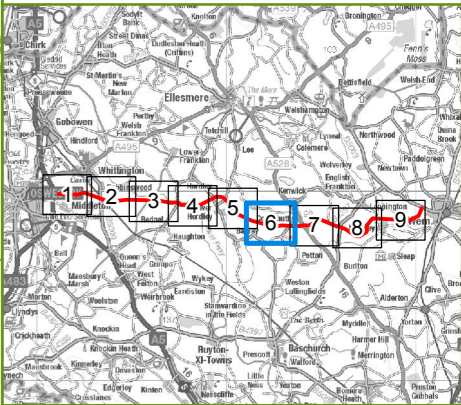
- PROPOSED 132 kV POLE POSITIONS
- FINAL ROUTE ALIGNMENT
- ORDER LIMITS

**Notes:**

This drawing is scaled at an A3 paper size, therefore any prints made at a smaller size will affect the accuracy of measurement units and should not be scaled against.



BACKGROUND MAPPING INFORMATION HAS BEEN REPRODUCED FROM THE ORDNANCE SURVEY MAP BY PERMISSION OF ORDNANCE SURVEY ON BEHALF OF THE CONTROLLER OF HER MAJESTY'S STATIONERY OFFICE. CROWN COPYRIGHT AND DATABASE RIGHTS 2018. ORDNANCE SURVEY 0100031673. CONTAINS OS DATA © CROWN COPYRIGHT AND DATABASE RIGHT 2018.



**GILLESPIES** **SP MANWEB**

Scheme Name: REINFORCEMENT TO NORTH SHROPSHIRE ELECTRICITY DISTRIBUTION NETWORK

Document: DCO DOCUMENT 2.5

Document Title: PLAN OF IMPORTANT HEDGEROWS AFFECTED 6 OF 9

Drawn: KC	Checked: ZF	Approved: JC	Date: 19/10/2018	Sheet: 6 OF 9	Rev: 1
-----------	-------------	--------------	------------------	---------------	--------

Document Type: FIGURE	Scale: 1:7,500	Sheet Size: A3 (420 mm x 297 mm)
-----------------------	----------------	----------------------------------



**KEY**

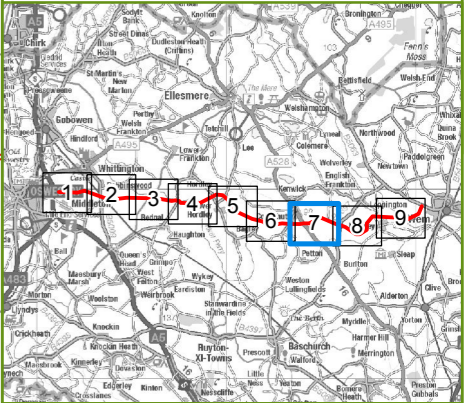
- PROPOSED 132 kV POLE POSITIONS
- FINAL ROUTE ALIGNMENT
- ORDER LIMITS

**Notes:**

This drawing is scaled at an A3 paper size, therefore any prints made at a smaller size will affect the accuracy of measurement units and should not be scaled against.



BACKGROUND MAPPING INFORMATION HAS BEEN REPRODUCED FROM THE ORDNANCE SURVEY MAP BY PERMISSION OF ORDNANCE SURVEY ON BEHALF OF THE CONTROLLER OF HER MAJESTY'S STATIONARY OFFICE. CROWN COPYRIGHT AND DATABASE RIGHTS 2018. ORDNANCE SURVEY 0100031673. CONTAINS OS DATA © CROWN COPYRIGHT AND DATABASE RIGHT 2018.



**GILLESPIES SP MANWEB**

Scheme Name: REINFORCEMENT TO NORTH SHROPSHIRE ELECTRICITY DISTRIBUTION NETWORK

Document: DCO DOCUMENT 2.5

Document Title: PLAN OF IMPORTANT HEDGEROWS AFFECTED 7 OF 9

Drawn: KC	Checked: ZF	Approved: JC	Date: 19/10/2018	Sheet: 7 OF 9	Rev: 1
Document Type: FIGURE	Scale: 1:7,500	Sheet Size: A3 (420 mm x 297 mm)			



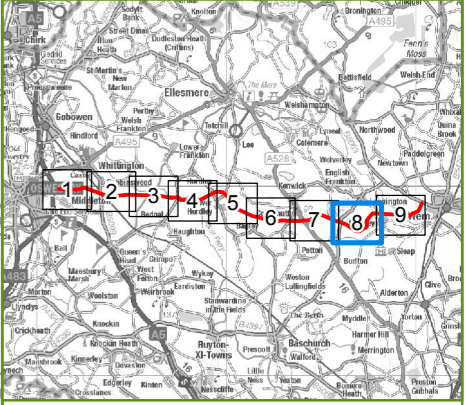


- KEY**
- PROPOSED 132 kV POLE POSITIONS
  - FINAL ROUTE ALIGNMENT
  - ORDER LIMITS

**Notes:**  
 This drawing is scaled at an A3 paper size, therefore any prints made at a smaller size will affect the accuracy of measurement units and should not be scaled against.



BACKGROUND MAPPING INFORMATION HAS BEEN REPRODUCED FROM THE ORDNANCE SURVEY MAP BY PERMISSION OF ORDNANCE SURVEY ON BEHALF OF THE CONTROLLER OF HER MAJESTY'S STATIONERY OFFICE. CROWN COPYRIGHT AND DATABASE RIGHTS 2018. ORDNANCE SURVEY 0100031673. CONTAINS OS DATA © CROWN COPYRIGHT AND DATABASE RIGHT 2018.



**GILLESPIES** **SP MANWEB**

Scheme Name: REINFORCEMENT TO NORTH SHROPSHIRE ELECTRICITY DISTRIBUTION NETWORK

Document: DCO DOCUMENT 2.5

Document Title: PLAN OF IMPORTANT HEDGEROWS AFFECTED 8 OF 9

Drawn: KC	Checked: ZF	Approved: JC	Date: 19/10/2018	Sheet: 8 OF 9	Rev: 1
-----------	-------------	--------------	------------------	---------------	--------

Document Type: FIGURE	Scale: 1:7,500	Sheet Size: A3 (420 mm x 297 mm)
-----------------------	----------------	----------------------------------

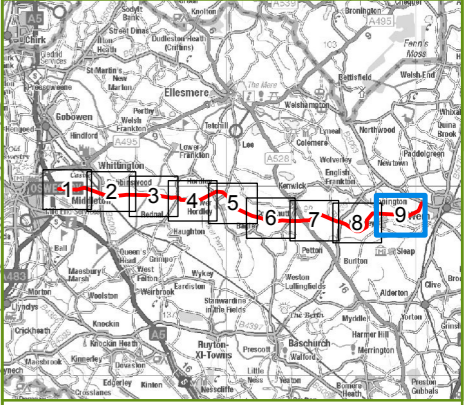


- KEY**
- PROPOSED 132 kV POLE POSITIONS
  - FINAL ROUTE ALIGNMENT
  - ORDER LIMITS

Notes:  
This drawing is scaled at an A3 paper size, therefore any prints made at a smaller size will affect the accuracy of measurement units and should not be scaled against.



BACKGROUND MAPPING INFORMATION HAS BEEN REPRODUCED FROM THE ORDNANCE SURVEY MAP BY PERMISSION OF ORDNANCE SURVEY ON BEHALF OF THE CONTROLLER OF HER MAJESTY'S STATIONERY OFFICE. CROWN COPYRIGHT AND DATABASE RIGHTS 2018. ORDNANCE SURVEY 0100031673. CONTAINS OS DATA © CROWN COPYRIGHT AND DATABASE RIGHT 2018.



**GILLESPIES** **SP MANWEB**

Scheme Name: REINFORCEMENT TO NORTH SHROPSHIRE ELECTRICITY DISTRIBUTION NETWORK

Document: DCO DOCUMENT 2.5

Document Title: PLAN OF IMPORTANT HEDGEROWS AFFECTED 9 OF 9

Drawn: KC	Checked: ZF	Approved: JC	Date: 19/10/2018	Sheet: 9 OF 9	Rev: 1
-----------	-------------	--------------	------------------	---------------	--------

Document Type: FIGURE	Scale: 1:7,500	Sheet Size: A3 (420 mm x 297 mm)
-----------------------	----------------	----------------------------------